

Enclosure ENCL2



ENCL2 is a robust enclosure designed to house up to two AxiomV panels.

It features a convenient removable cover mounted on heavy duty hinges and allowing 180° swing, lock and a tamper switch.

Installation is made convenient by a number of conduit access points on all sides of the enclosure.

Features:

- Removable Door
- Lock With 2 Keys
- Tamper Switch
- 2-Stage Knock Outs
- PS-1224 Mount
- Ventilation Slats
- Optional Adapter Plate

ENCL2

Includes:

- Lock with 2 Keys
- Tamper Switch

ENCL2-PS

Includes:

- Lock with 2 Keys
- Tamper Switch
- PS-1224 Power Supply
 - In: 16.5 VAC 40 VA
 - Out: 12 VDC @ 2.5A

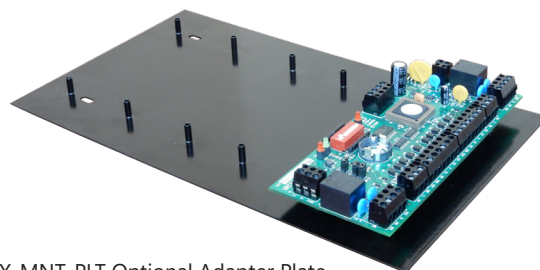
Works With:

AxiomV Panels

- RC-2 / NURC-2002-B** / NIRC-2000-B**
-Reader Controller
- IOC-16
-Input/Output Controller
- UNC-100
-Universal Controller
- UNC-500
-Universal Controller

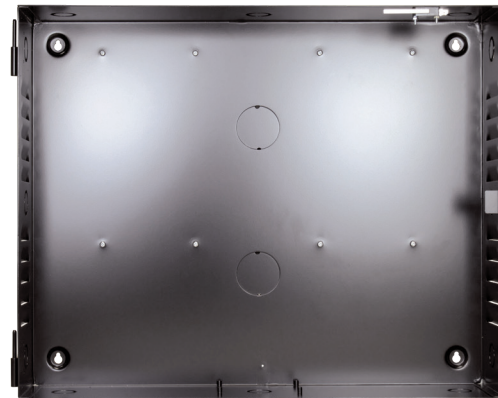
AxiomV Adapter Plate

- AX-MNT-PLT



*AX-MNT-PLT Optional Adapter Plate
Accommodates up to three NURC-2002-B or one NIRC-2000-B
** Requires AX-MNT-PLT Optional Adapter Plate

Specifications	
Dimensions:	Metal housing with 4 mounting holes
Width	21" (53 cm)
Height	17" (43 cm)
Depth	4 ½" (11.5 cm)
Conduit Access:	14
Top	3 of 22 stage: ¾" and 1" knockouts
Bottom	3 of 22 stage: ¾" and 1" knockouts
Left	3 of 22 stage: ¾" and 1" knockouts
Right	3 of 22 stage: ¾" and 1" knockouts
Back	2 of 2" knockouts
Tamper Switch	N.O. 2A max
Weight	19 lbs (8.6 Kg)



*ENCL2 with door off



WWW.RBH-ACCESS.COM

© RBH Access Technologies, Inc. 2016